



REQUEST FOR QUOTES

Project: William Bryant Park sidewalks.

Scope:

- Pour approximately 1160 linear feet of 5ft. wide sidewalks. Including installation of 2 handicap ramps 5800 total square feet total.
- Demo existing concrete and brick sign.
- This quote is for labor only. MCCPRA will purchase materials.

Details are outlined on page 2.

COI, E-verify affidavit, and W-9 required.

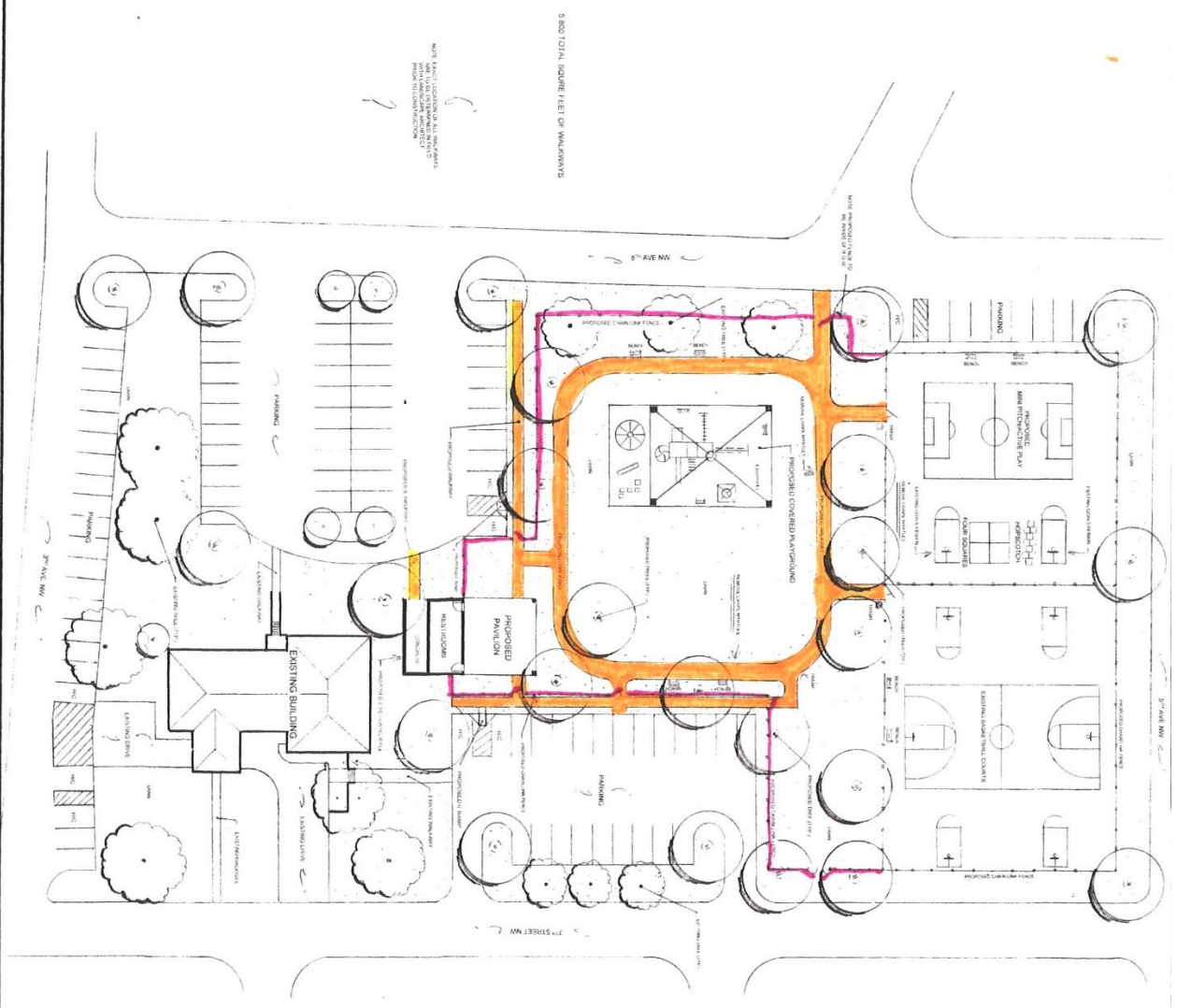
Please submit bids to Maggie Davidson at 1020 4th Street SW Moultrie, GA 31768 or by email at maggie.davidson@mccpra.com by May 28, 2024 at 5pm.

Contact Maggie Davidson at (229) 668-0028 or (229) 456-1341 or Jonathan Vines at (229) 454-0412 for more information.

Thank you,

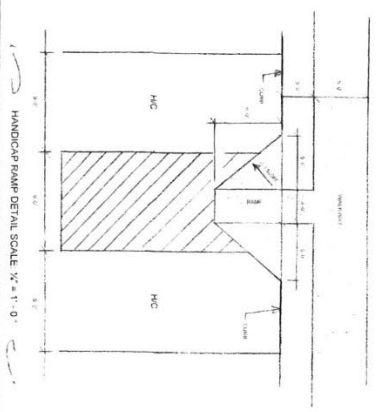
Maggie Davidson

CONCEPTUAL
LANDSCAPE DEVELOPMENT PLAN
WILLIAM BRYANT PARK
7TH STREET NW - MOUNTREE, GA
NOV 9, 2024 SCALE: 1" = 20'
JENNIFER HAN, ARCHITECT
LANDSCAPE ARCHITECTS
MOUNTREE, GEORGIA
229-434-0412



5,800 TOTAL SQUARE FEET OF WALKWAYS

NOTE: SEE PLAN LOCATIONS FOR ALL DIMENSIONS AND MATERIALS. ALL DIMENSIONS ARE TO FACE UNLESS OTHERWISE NOTED. ALL DIMENSIONS ARE TO FACE UNLESS OTHERWISE NOTED. ALL DIMENSIONS ARE TO FACE UNLESS OTHERWISE NOTED.



NOTE: SEE PLAN LOCATIONS FOR ALL DIMENSIONS AND MATERIALS. ALL DIMENSIONS ARE TO FACE UNLESS OTHERWISE NOTED. ALL DIMENSIONS ARE TO FACE UNLESS OTHERWISE NOTED. ALL DIMENSIONS ARE TO FACE UNLESS OTHERWISE NOTED.

GENERAL NOTES:
1. LANDSCAPE ARCHITECTURE AND LANDSCAPE CONSTRUCTION ARE SEPARATE DISCIPLINES. THE LANDSCAPE ARCHITECT'S RESPONSIBILITY IS TO PROVIDE A LANDSCAPE DESIGN AND CONSTRUCTION DOCUMENTS TO THE ARCHITECT FOR CONSTRUCTION. THE ARCHITECT'S RESPONSIBILITY IS TO PROVIDE A CONSTRUCTION DOCUMENTS TO THE ARCHITECT FOR CONSTRUCTION. THE ARCHITECT'S RESPONSIBILITY IS TO PROVIDE A CONSTRUCTION DOCUMENTS TO THE ARCHITECT FOR CONSTRUCTION.
2. THE LANDSCAPE ARCHITECT'S DESIGN SHALL BE SUBJECT TO THE APPROVAL OF THE ARCHITECT AND THE CITY OF MOUNTREE, GEORGIA.
3. THE LANDSCAPE ARCHITECT'S DESIGN SHALL BE SUBJECT TO THE APPROVAL OF THE ARCHITECT AND THE CITY OF MOUNTREE, GEORGIA.
4. THE LANDSCAPE ARCHITECT'S DESIGN SHALL BE SUBJECT TO THE APPROVAL OF THE ARCHITECT AND THE CITY OF MOUNTREE, GEORGIA.